

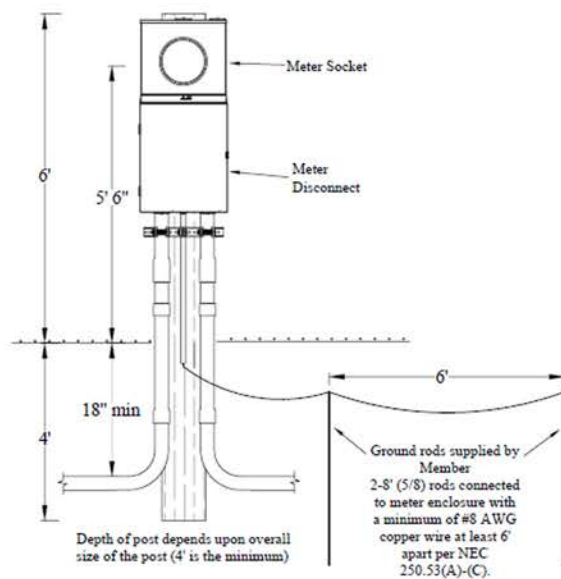


Eastern Maine 
Electric Cooperative

A Touchstone Energy Cooperative

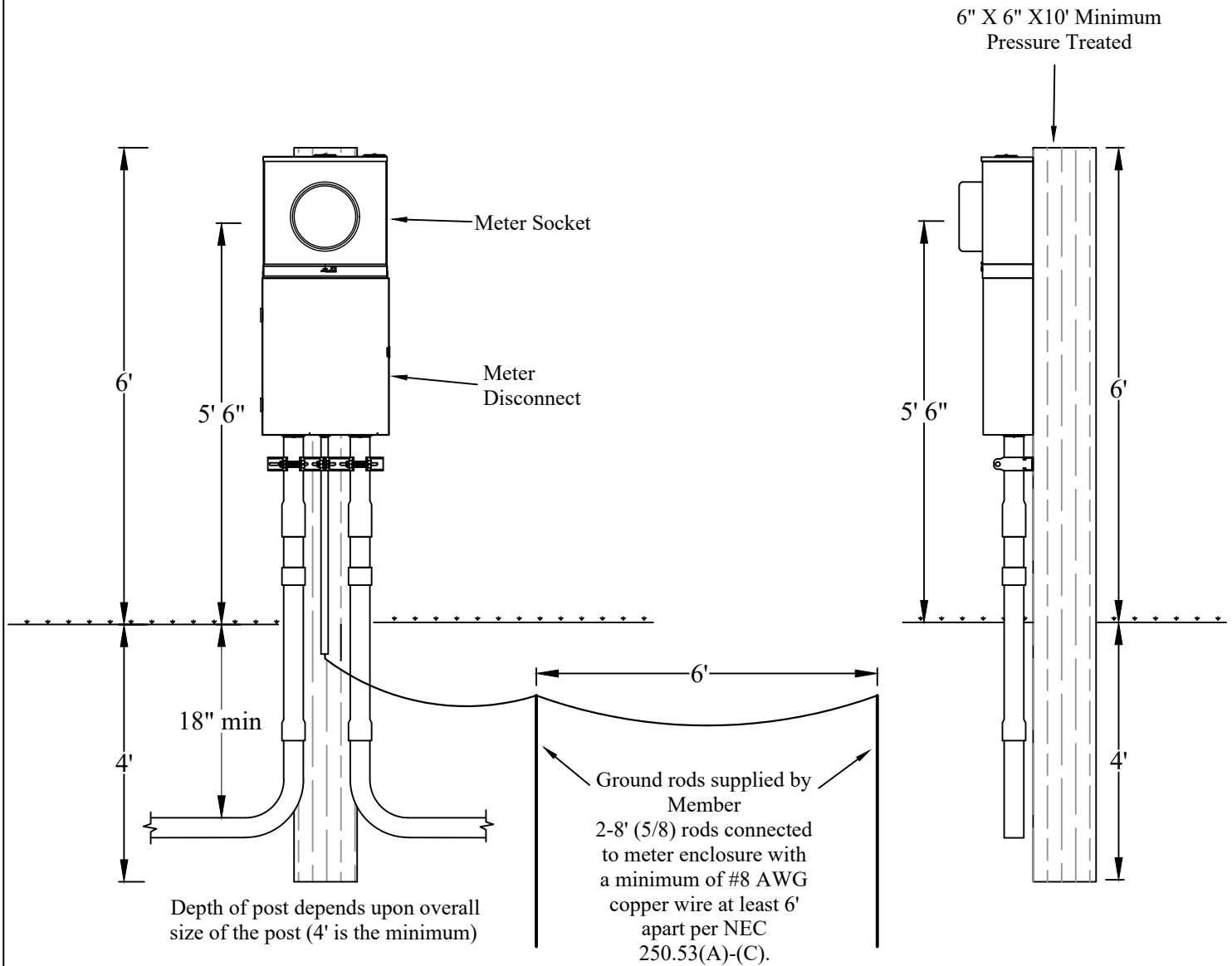


Pedestal Service Specifications



EMEC Engineering Department
(207) 454-7555, menu option 5
Engineering@emec.com




Updated 1/19/2026

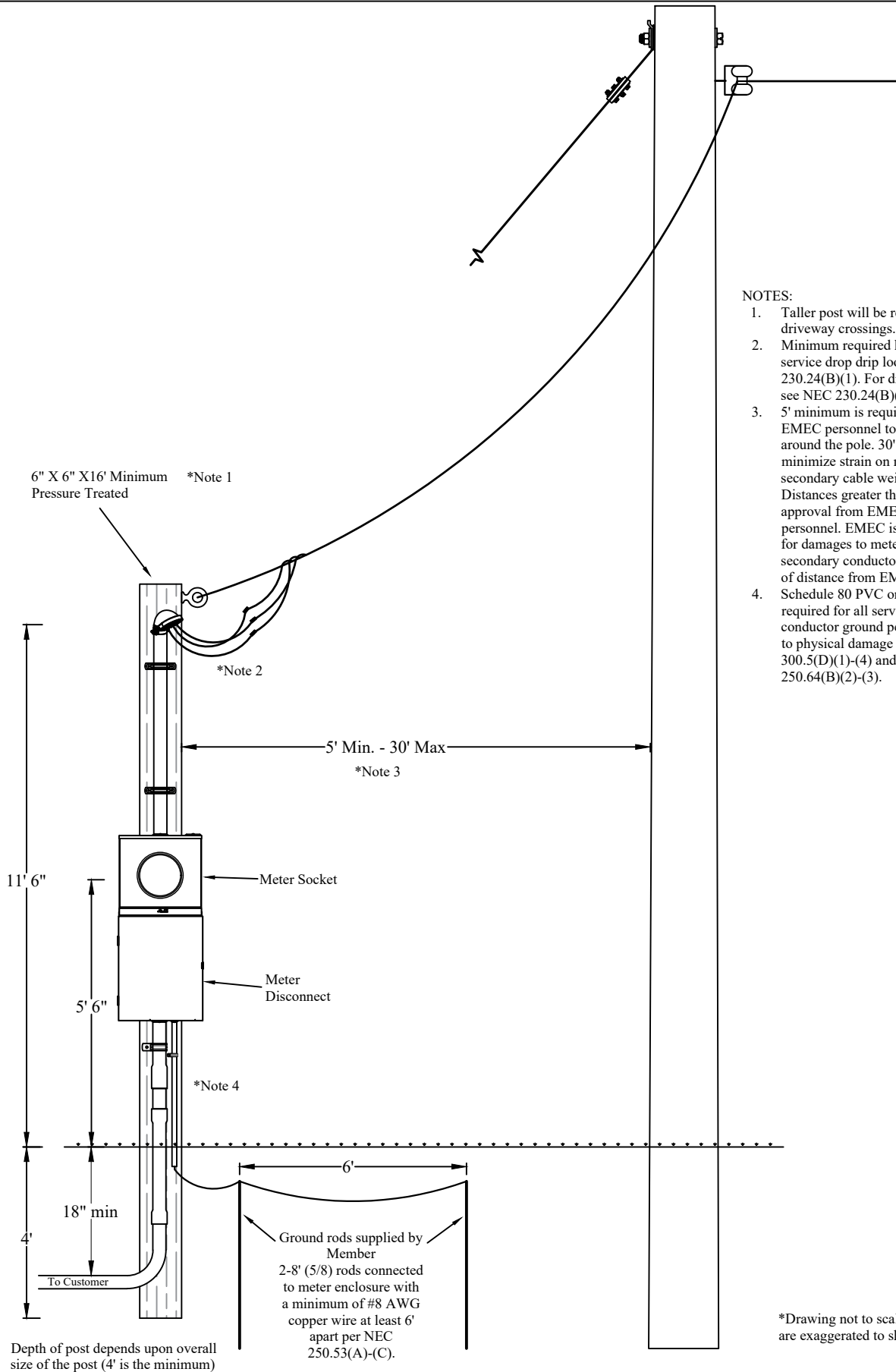


NOTES:

1. Schedule 80 PVC or greater is required for all service and grounding conductor ground penetrations subject to physical damage per NEC 300.5(D)(1)-(4) and NEC 250.64(B)(2)-(3).
2. Mounting dimensions and codes apply to dwelling mounted services.

Drawing not to scale. Some details are exaggerated to show detail.

 Eastern Maine Electric Cooperative A Touchstone Energy Cooperative <i>The power of human connections</i>		EASTERN MAINE ELECTRIC COOPERATIVE	
		CALAIS, ME	
 Serving the Eastern Border of the United States		METER PEDESTAL FOR UNDERGROUND SERVICES	
		DES: EMEC DRN: ASB CKD: ASB SCALE: NONE DATE: 1/15/26	DWG. NO. MTR-001 REV  1



NOTES:

1. Taller post will be required for driveway crossings.
2. Minimum required height to bottom of service drop drip loop is 10' per NEC 230.24(B)(1). For driveway crossings see NEC 230.24(B)(2).
3. 5' minimum is required to allow EMEC personnel to work safely around the pole. 30' maximum to minimize strain on meter post due to secondary cable weight and tension. Distances greater than 30' require prior approval from EMEC Engineering personnel. EMEC is not responsible for damages to meter post due to secondary conductor strain regardless of distance from EMEC pole.
4. Schedule 80 PVC or greater is required for all service and grounding conductor ground penetrations subject to physical damage per NEC 300.5(D)(1)-(4) and NEC 250.64(B)(2)-(3).

Drawing not to scale. Some parts are exaggerated to show detail.



**Eastern Maine
Electric Cooperative**
A Touchstone Energy® Cooperative
The power of human connections®

*Serving the
Eastern Border
of the United States*

DES: EMEC DRN: ASB
CKD: ASB SCALE: NONE
DATE: 3/18/25

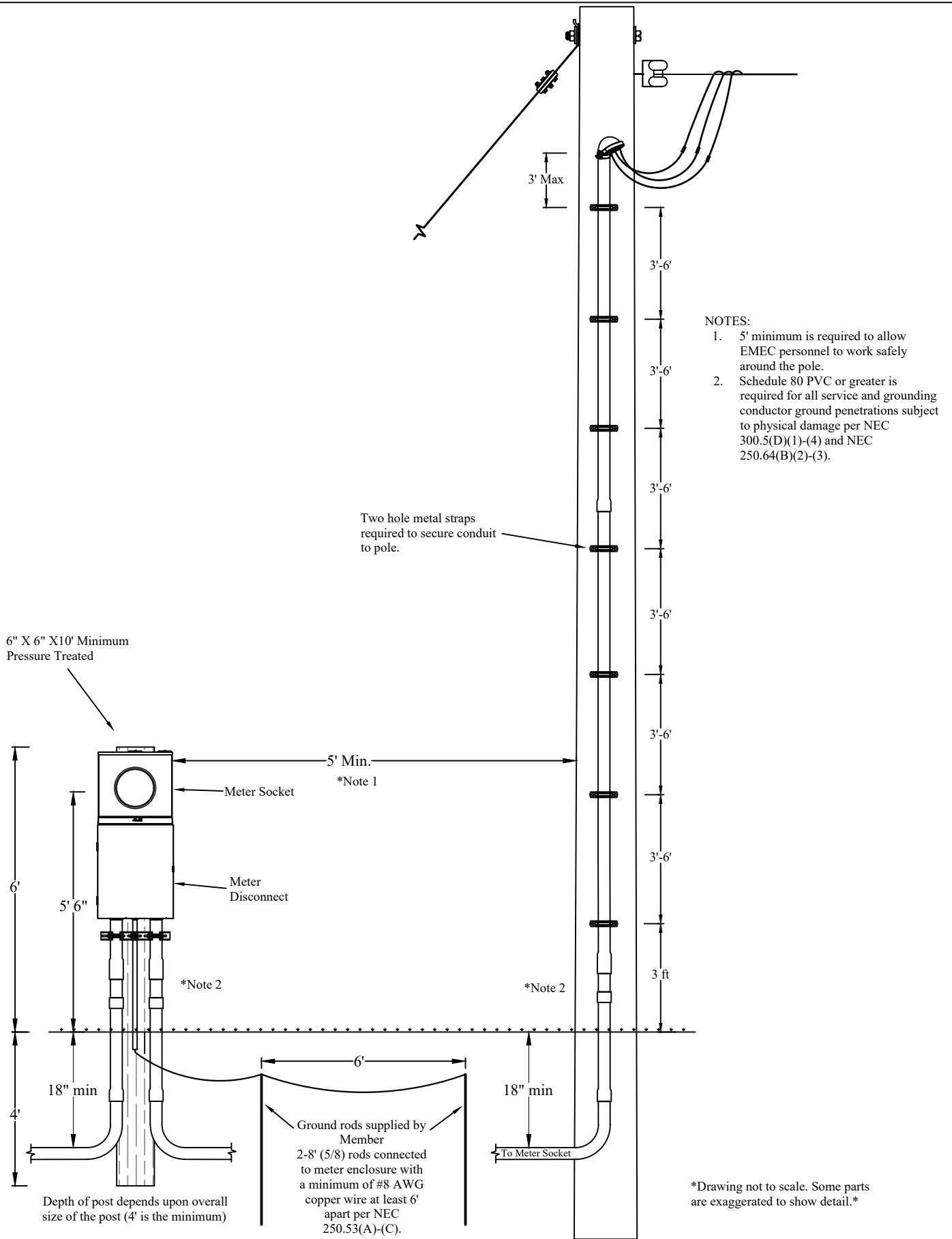
EASTERN MAINE ELECTRIC COOPERATIVE

CALAIS, ME

METER PEDESTAL WITH OVERHEAD SERVICE DROP

DWG. NO. MTR-002

REV 1



**Eastern Maine
Electric Cooperative**
A Touchstone Energy® Cooperative
The power of human connections®

*Serving the
Eastern Border
of the United States*

DES: EMEC DRN: ASB
CKD: ASB SCALE: NONE
DATE: 1/15/2026

EASTERN MAINE ELECTRIC COOPERATIVE

CALAIS, ME

**METER PEDESTAL WITH
UNDERGROUND SERVICE**

DWG. NO. MTR-003

REV 1